

Represented by



ILLING[™]
P A C K A G I N G

Product Specification Sheet

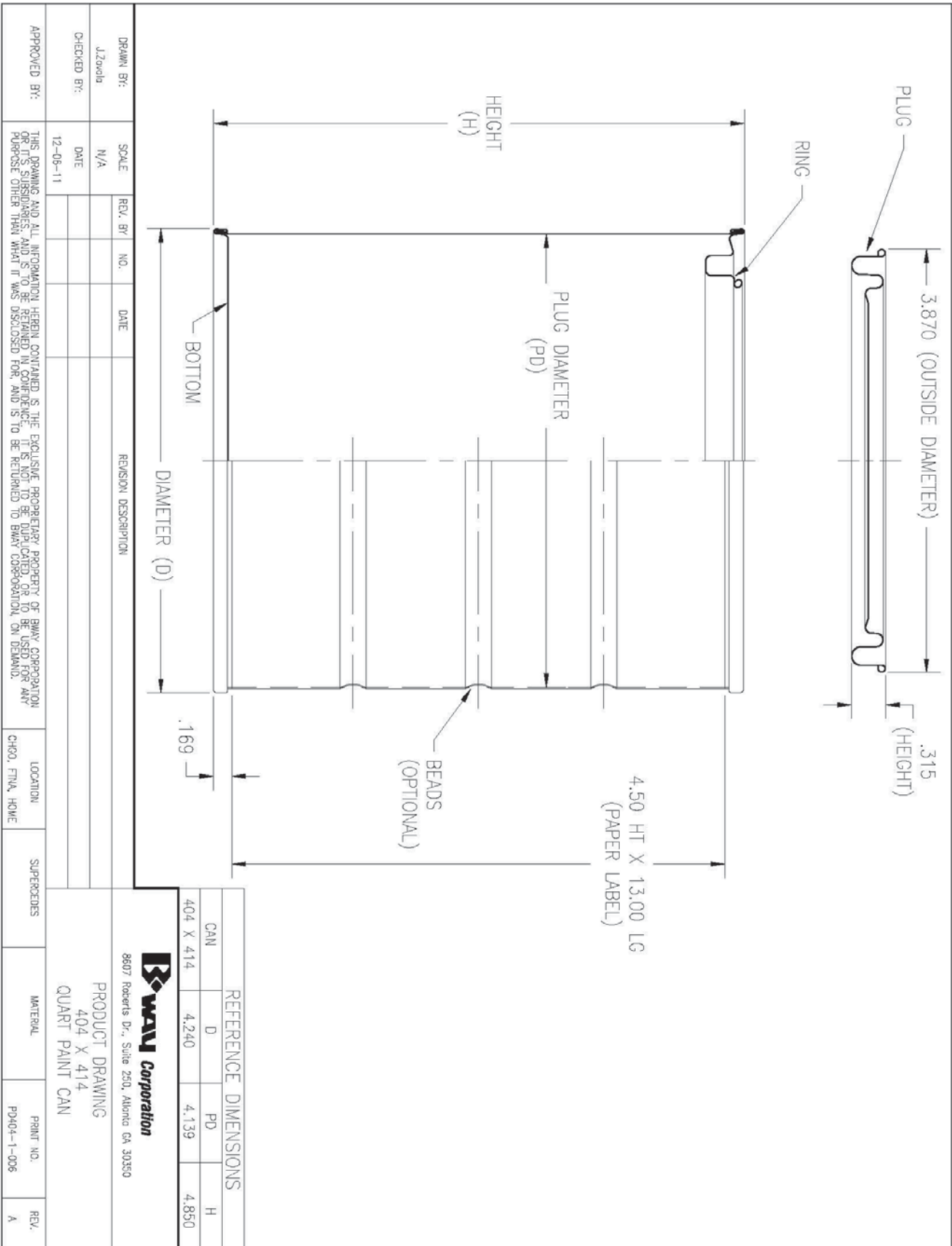
Illing Part#

1104AGB

1 QUART (32 OZ) TIN CAN 4018 GLD LND DT BULK PACK

Part #: 1104AGB

Size:	1 Quart (32 Ounces)
Color:	- - -
Material:	Tin
Style:	Tin Can
Additional Info:	Lined Gold 4018, Double Tight
Case Pack:	1,296 each
Pallet Pack:	1,296 each



APPROVED BY:	THIS DRAWING AND ALL INFORMATION HEREIN CONTAINED IS THE EXCLUSIVE PROPRIETARY PROPERTY OF BWAY CORPORATION OR ITS SUBSIDIARIES, AND IS TO BE RETAINED IN CONFIDENCE. IT IS NOT TO BE DUPLICATED, OR TO BE USED FOR ANY PURPOSE OTHER THAN THAT IT WAS DISCLOSED FOR, AND IS TO BE RETURNED TO BWAY CORPORATION, ON DEMAND.			LOCATION	SUPERSEDES	MATERIAL	PRINT NO.	REV.
DRAWN BY:	SCALE	REV. BY	NO.	DATE	REVISION DESCRIPTION			
J.Zewala	N/A							
CHECKED BY:	DATE							
	12-09-11							

BWAY Corporation
 8607 Roberts Dr., Suite 250, Atlanta GA 30350

PRODUCT DRAWING
 404 X 414
 QUART PAINT CAN

CHGO, FNLA, HOME								
------------------	--	--	--	--	--	--	--	--

Represented by



ILLING[™]
P A C K A G I N G

Product Specification Sheet

Illing Part#

1104AGB



Customer Coating Data Sheet

Liner Description/Color: 36S67AA/Gold

Film Resin: Epoxy Phenolic

Use: Solvent based products

Component: Plug, ring, body & bottom

FDA Status: Compliant 175.300

Application Method: Roll coat

Cure Temperature: 385°F PMT

Compatibility

Formulated products have different characteristics and do not always perform the same. In the absence of commercial packaging history, commodity testing is suggested to confirm liner and product compatibility. Testing should be conducted prior to commercial filling.