

Represented by



Product Specification Sheet

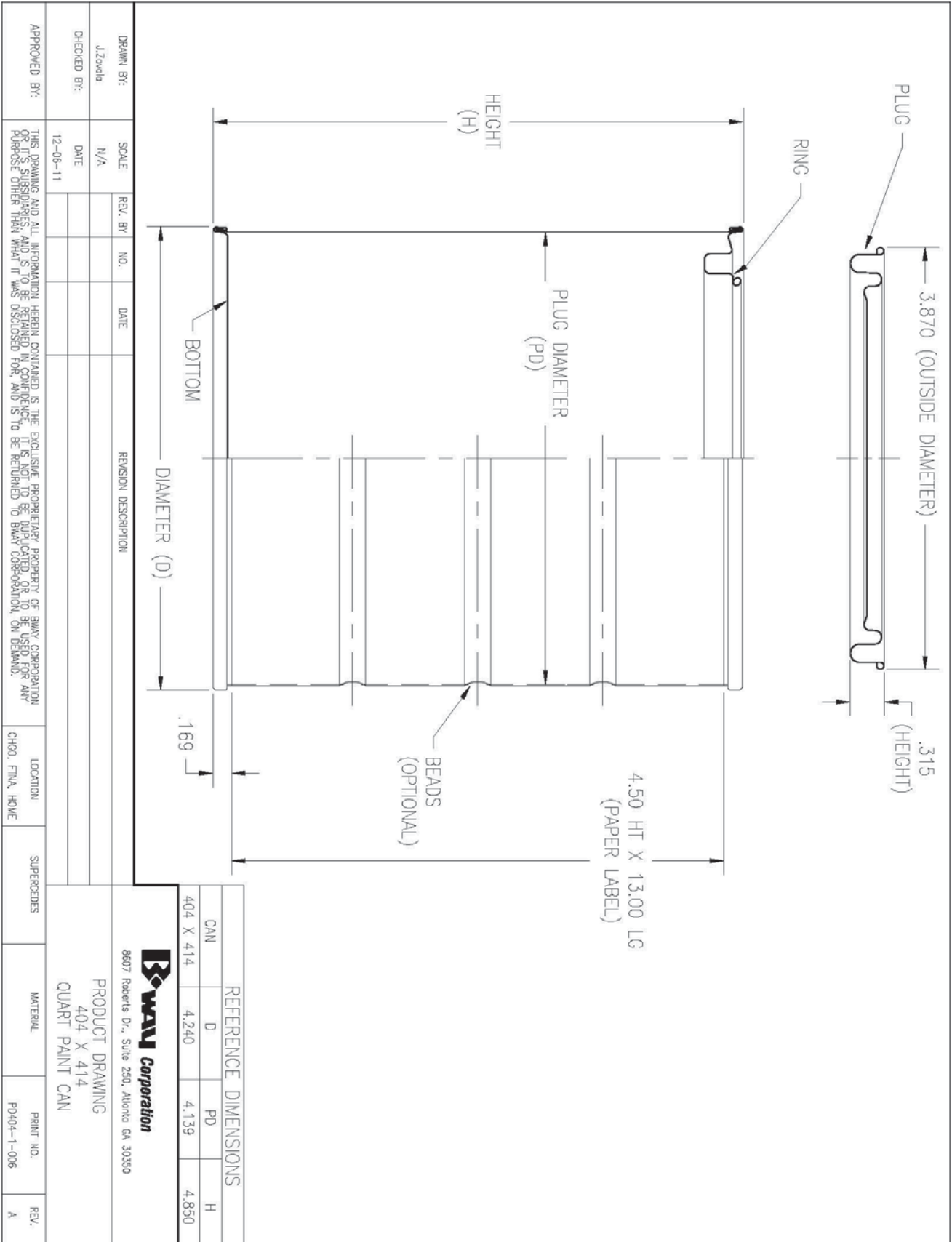
Illing Part#

1104AG

1 QUART TIN CAN & PLUG 4018 GLD LND DT (32 OZ)

Part #: 1104AG

Size:	1 Quart (32 Ounces)
Color:	- - -
Material:	Tin
Style:	Tin Can & Plug
Additional Info:	Lined Gold 4018, Double Tight
Case Pack:	112 each
Pallet Pack:	1,792 each



Represented by



ILLING[™]
P A C K A G I N G

Product Specification Sheet

Illing Part#

1104AG



Customer Coating Data Sheet

Liner Description/Color: 36S67AA/Gold

Film Resin: Epoxy Phenolic

Use: Solvent based products

Component: Plug, ring, body & bottom

FDA Status: Compliant 175.300

Application Method: Roll coat

Cure Temperature: 385°F PMT

Compatibility

Formulated products have different characteristics and do not always perform the same. In the absence of commercial packaging history, commodity testing is suggested to confirm liner and product compatibility. Testing should be conducted prior to commercial filling.