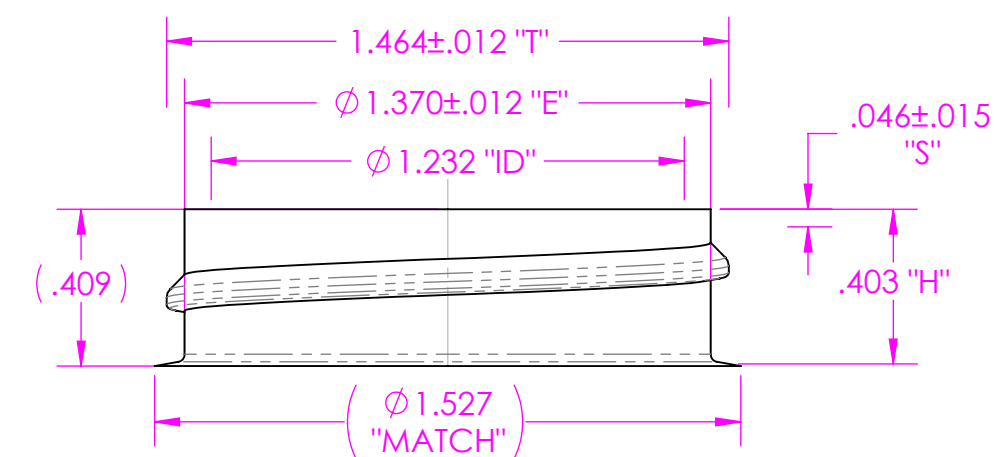
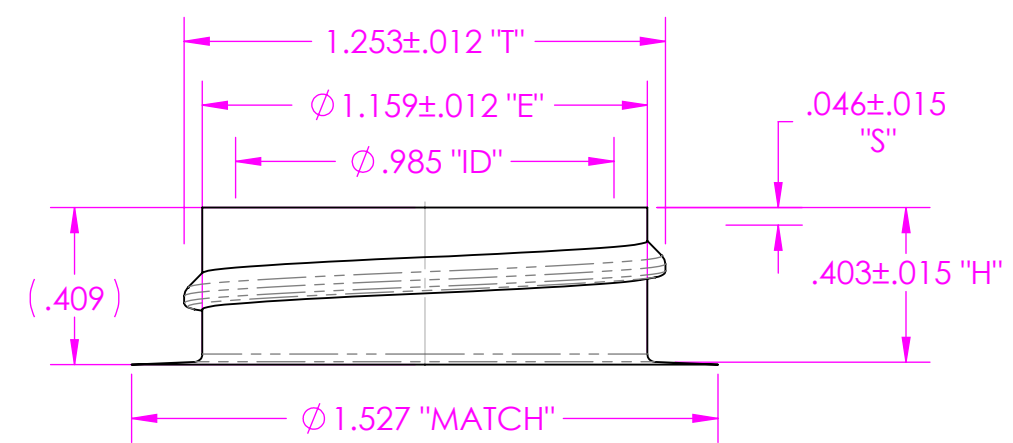


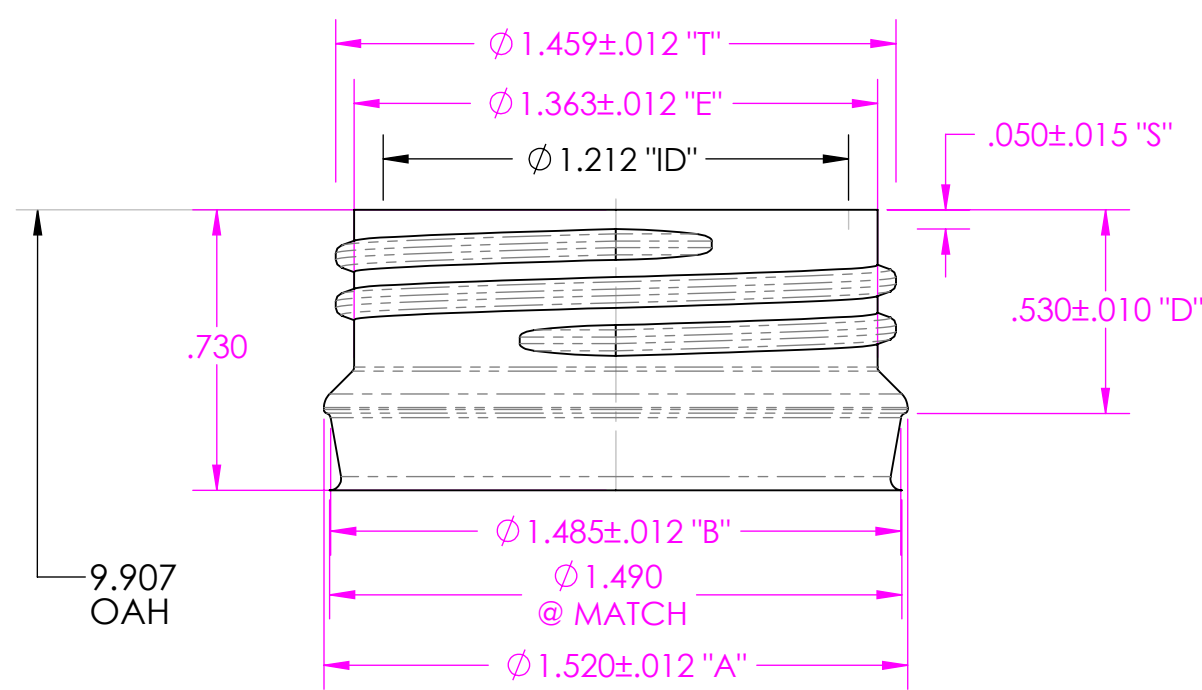
REVISIONS			
REV.	DESCRIPTION	DATE	APPROVED
A	ADDED 38mm HUSKY NECK FINISH	10/2/2014	KDG
B	VIEW ADDED SHOWING 38mm HUSKY NECK	10/7/2014	KDG
C	1)NECK FINISH WAS HUSKY PCF 2)OAH WAS 9.928	10/11/2014	KDG
D	ADDED SHEETS 2-7	3/25/2016	MTS



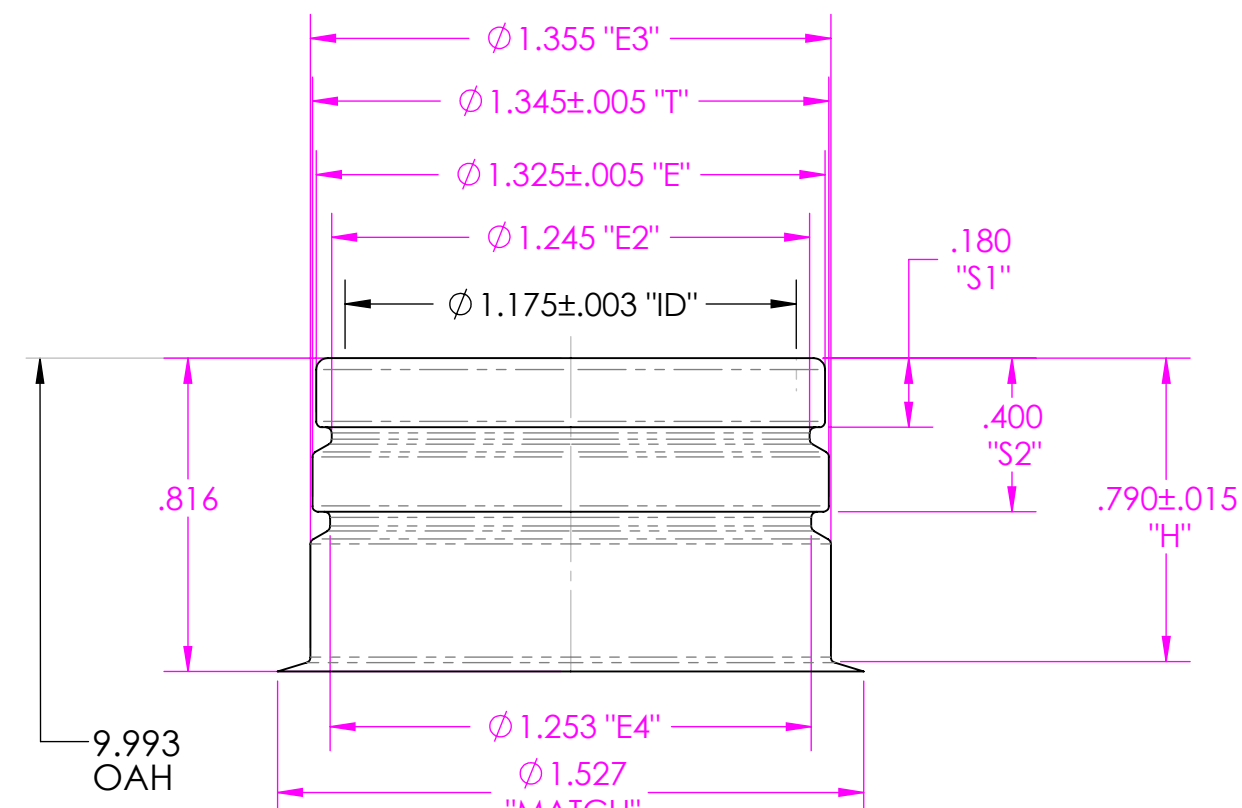
38mm SP 400 NECK FINISH
 THREAD NOTES:
 1. 6 THREADS PER INCH
 2. 1 TURN OF THREAD
 3. "M" STLYE THREAD PROFILE
 4. THREAD START 90° TO P/L IN BUSHING HALF



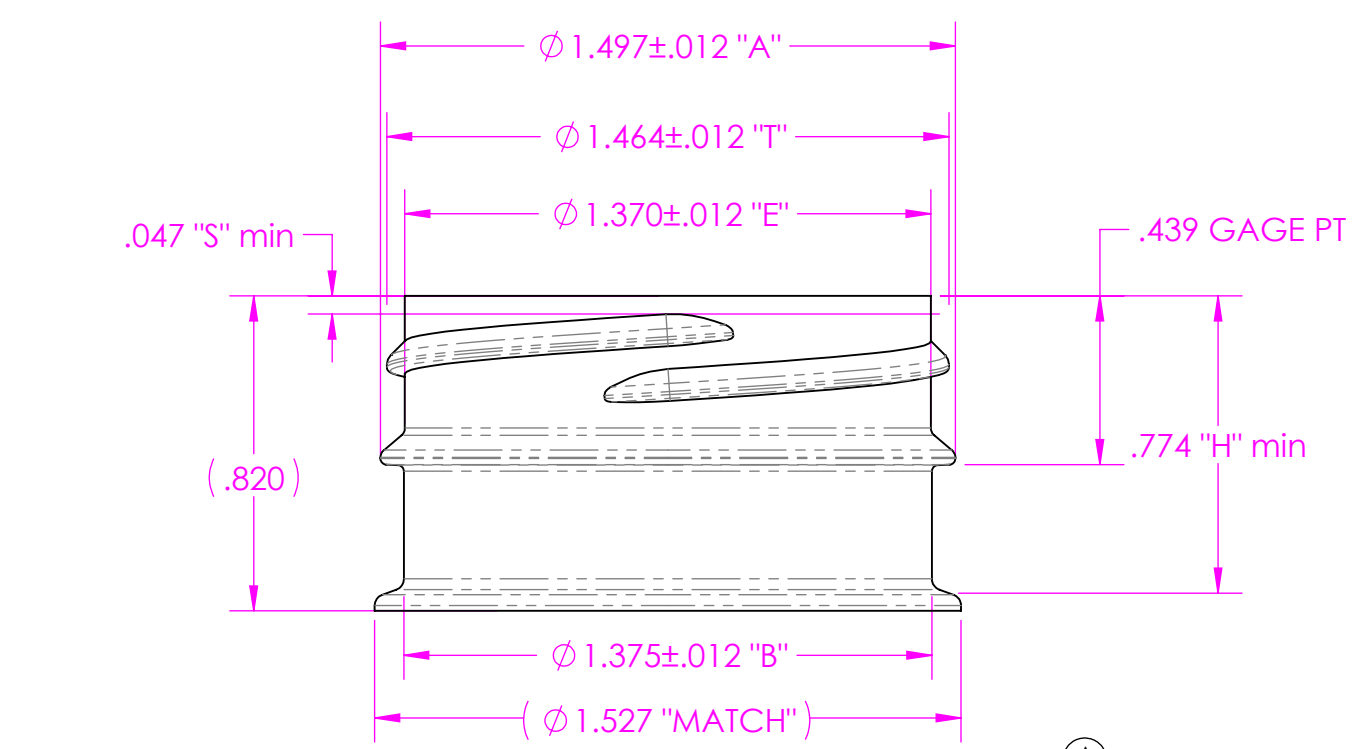
ALTERNATE
 33mm SP 400 NECK FINISH
 THREAD NOTES:
 1. 6 THREADS PER INCH
 2. 1 TURN OF THREAD
 3. "M" STLYE THREAD PROFILE
 4. THREAD START 90° TO P/L IN BUSHING HALF



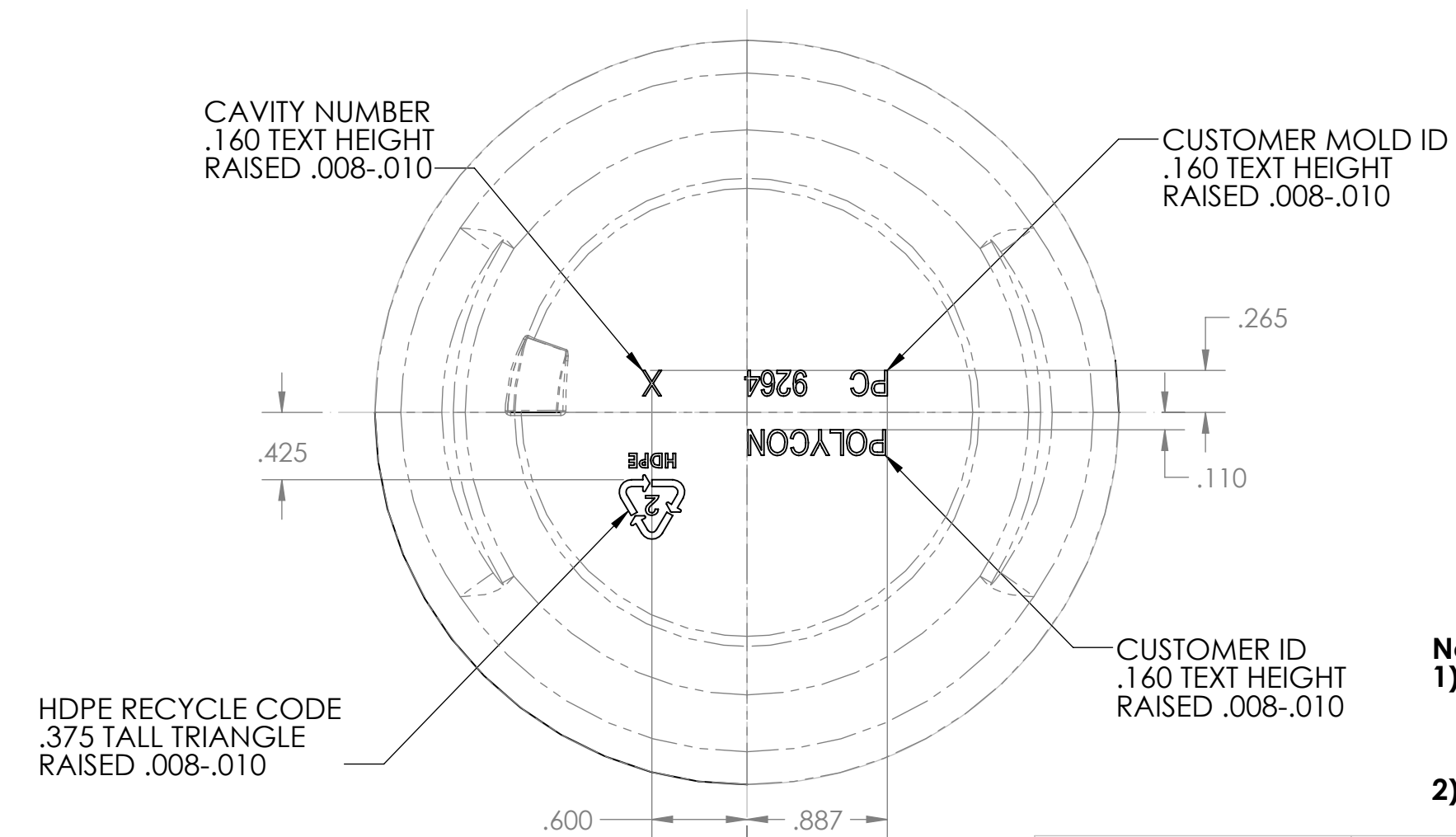
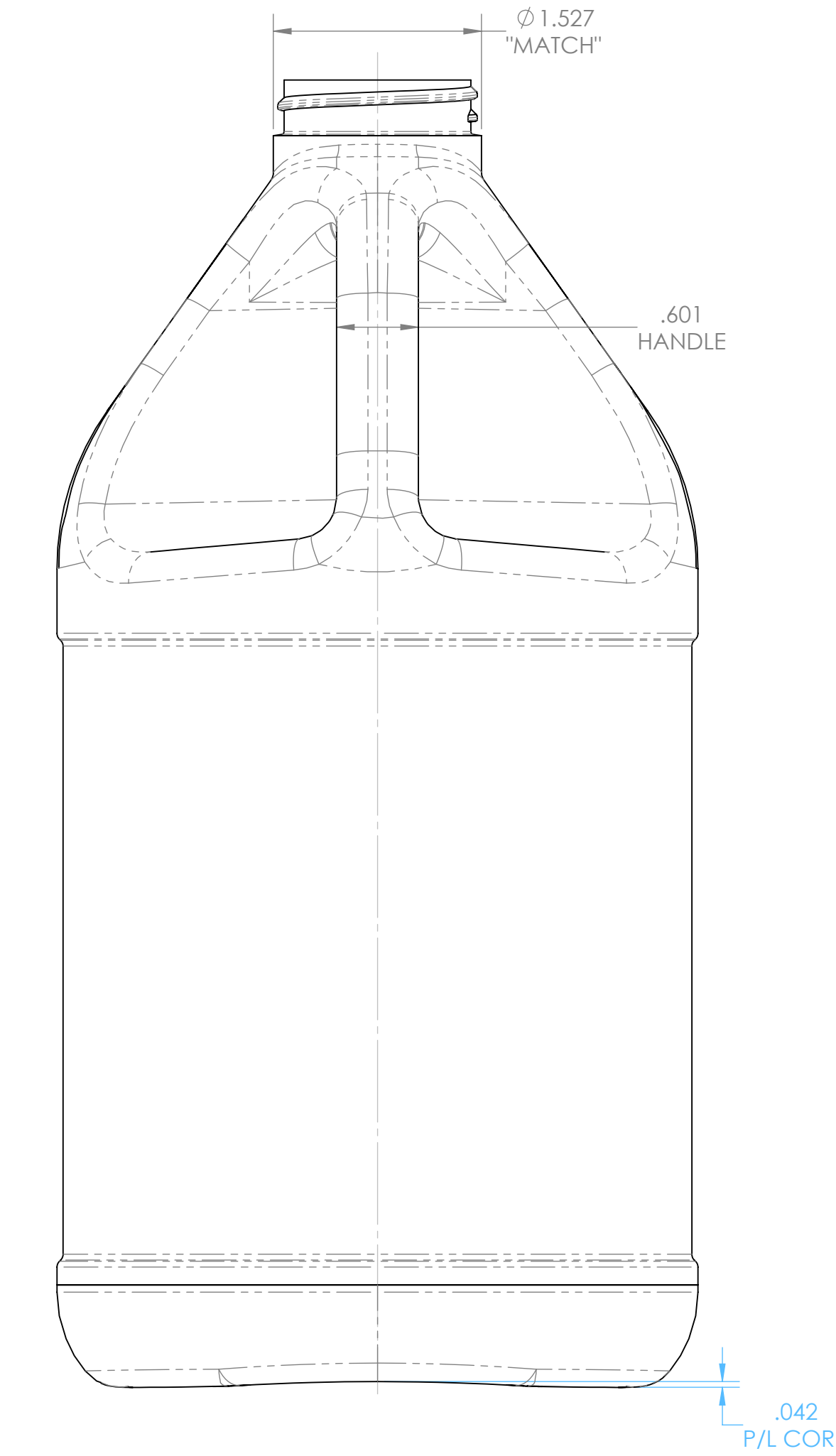
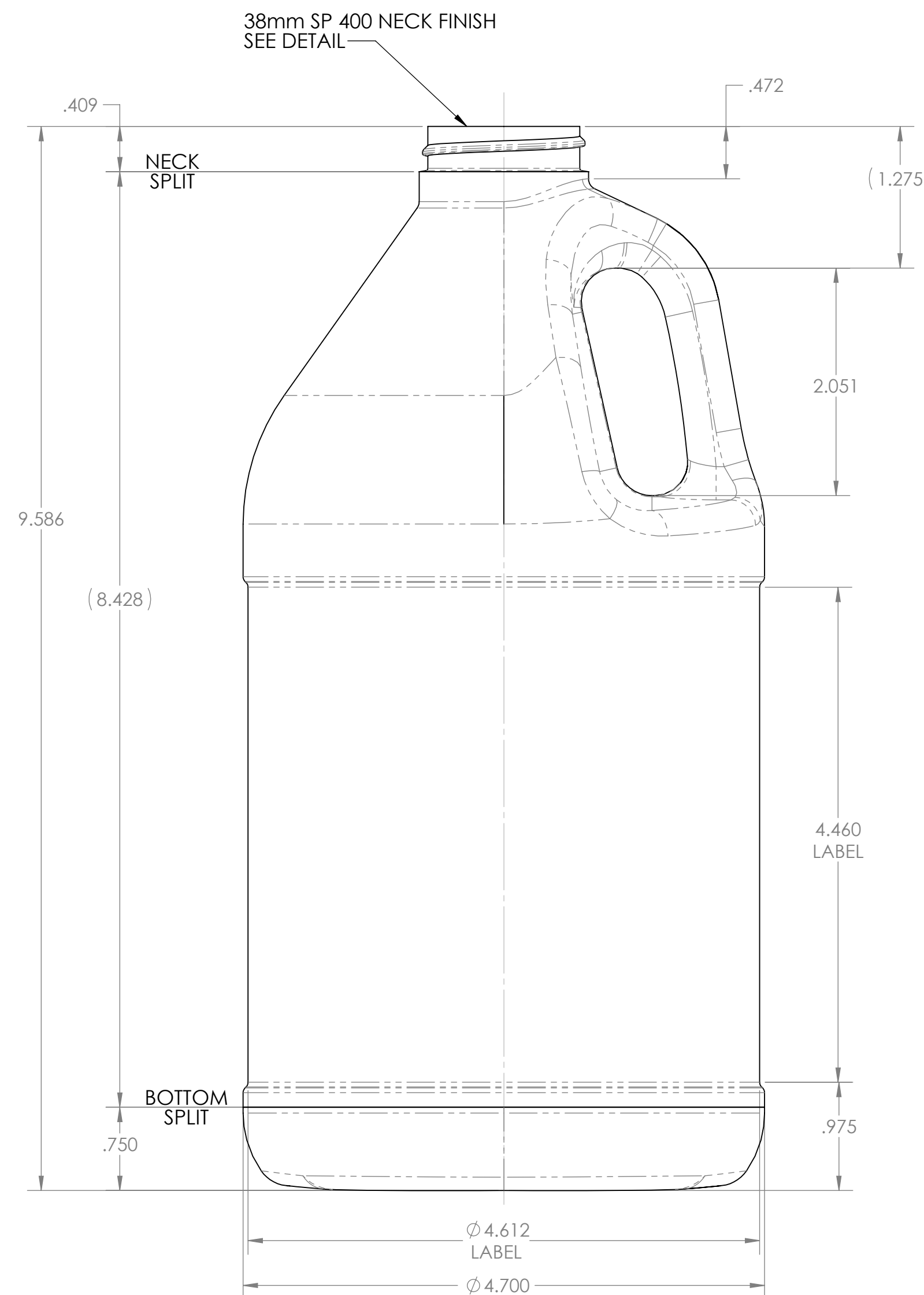
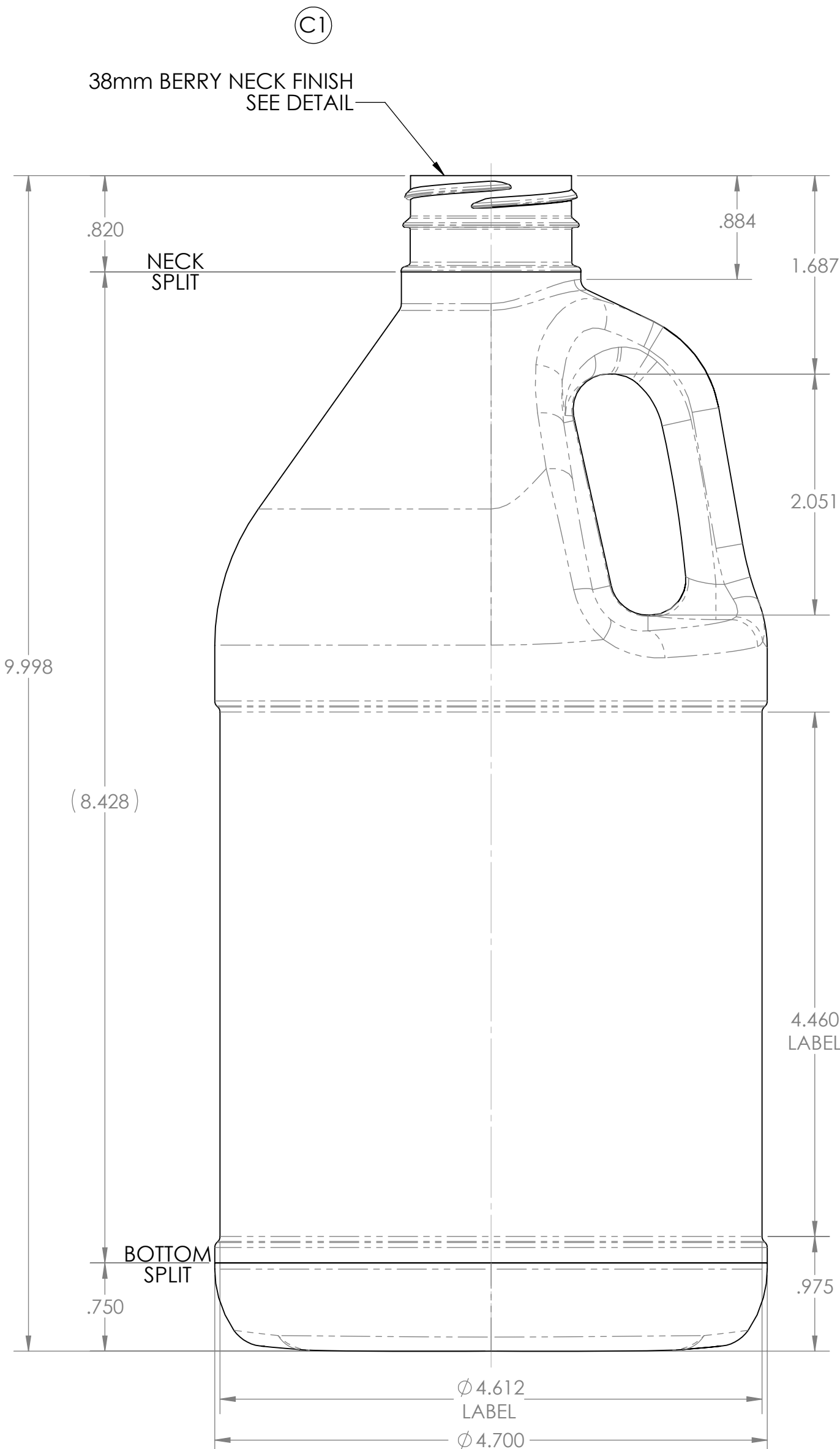
ALTERNATE
 38mm DROP-LOK
 THREAD NOTES:
 1. 8 THREADS PER INCH
 2. 2 TURNS OF THREAD
 3. REF HOFFER SPEC. #1787-D
 4. THREAD START 90° TO P/L IN PIN HALF



ALTERNATE
 38mm PORTOLA LT NECK FINISH
 SPEC # N390022A PULL UP



38mm BERRY NECK FINISH
 THREAD NOTES:
 1. 2 LEADS 180° APART
 2. 3.5 THREADS PER INCH, .286 TRAVEL PER TURN
 3. 180° OF FULL THREAD PER LEAD
 4. BERRY SPEC. SD-12-3426

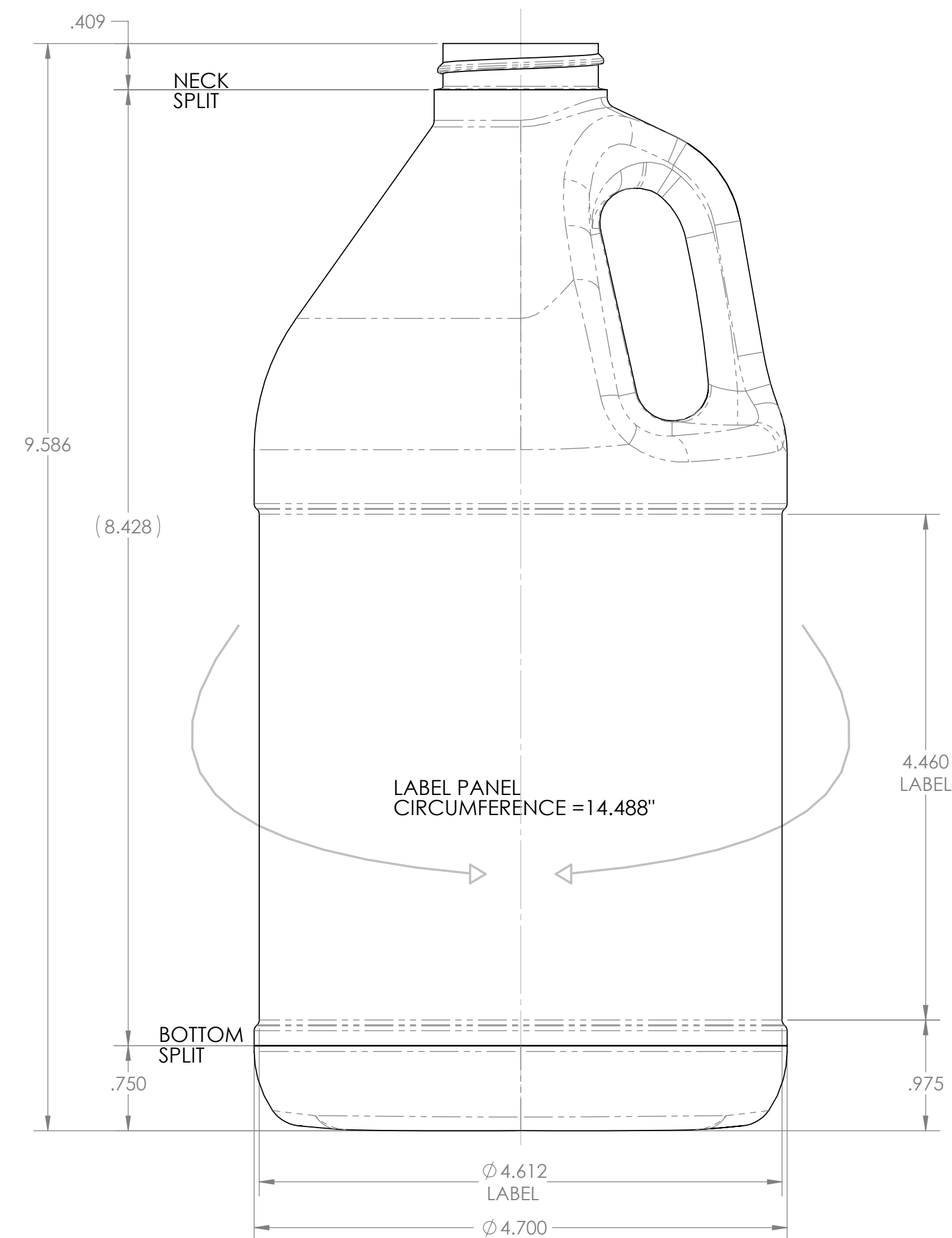


Notes:
 1) Tolerances Unless Specified:
 Vertical -- ±.060
 Horizontal -- ±.080
 Volumetric -- ±0.81 oz
 2) Bottles to be Checked Aged with 20° C water

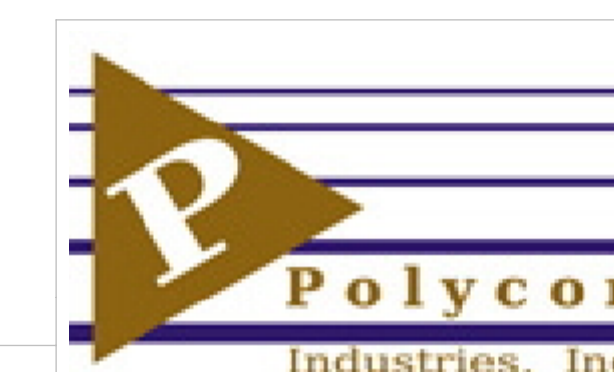
PROPRIETARY AND CONFIDENTIAL <small>THE INFORMATION CONTAINED IN THIS DRAWING IS THE SOLE PROPERTY OF MID-AMERICA MACHINING, INC. ANY REPRODUCTION IN PART OR AS A WHOLE WITHOUT THE WRITTEN PERMISSION OF MID-AMERICA MACHINING, INC. IS PROHIBITED.</small>	Drawn By: KDG Checked: MJS Customer: PolyCon Job#: 19963 Reference Materials: PC 9264	Date: 10JAN14 Date: 10JAN14	Container Data: Weight: 70 grams Fill Level Capacity: 64 oz Overflow Capacity: 65.9 oz Material: HDPE Avg. Wall Thickness:	Description: Product Drawing 64 oz Industrial RD Size: D Drawing Number: MA7225-2 Scale: 1:1	REV D SHEET 1 OF 7
---	---	--------------------------------	---	--	-----------------------



REV.	DESCRIPTION	DATE	APPROVED
-	See Sheet1	-	-



MA7225-2 64oz INDUSTRIAL RD			
CUSTOMER SPECIFICATION REQUIREMENTS			
CUSTOMER	ANY		
CODE #	ANY		
MOLD #	PC 9264		
NECK FINISH	38mm SP400		
RESIN	HDPE		
COLOR	ANY		
ITEM	MINIMUM	TARGET	MAXIMUM
WEIGHT (grams)		70	
SLANT			.020"
OVALITY			.050"
WALL THICKNESS	.018" (CORNERS)		
WALL THICKNESS	.030" (BODY)		



PROPRIETARY AND CONFIDENTIAL <small>THE INFORMATION CONTAINED IN THIS DRAWING IS THE SOLE PROPERTY OF MID-AMERICA MACHINING, INC. ANY REPRODUCTION IN PART OR AS A WHOLE WITHOUT THE WRITTEN PERMISSION OF MID-AMERICA MACHINING, INC. IS PROHIBITED.</small>	Drawn By: MTS	Date: 3/18/2016	Container Data:
	Checked:	Date:	Weight
	Customer: ~	Job# :	Fill Level Capacity
	Reference Materials:		Overflow Capacity
			Material
			Avg. Wall Thickness

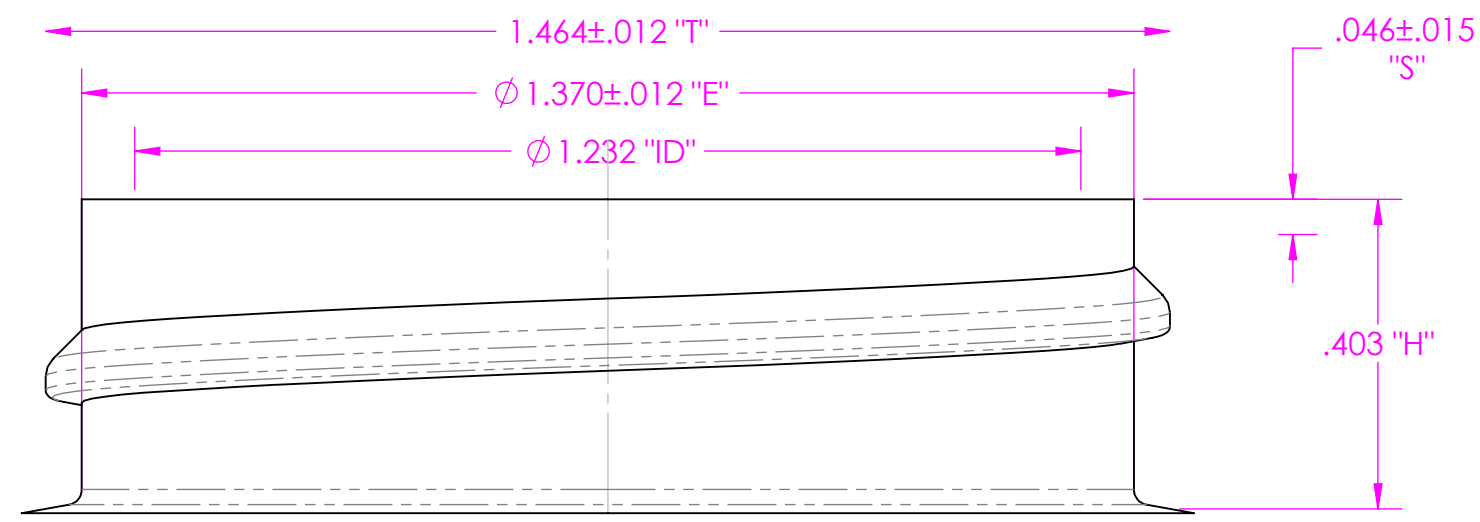
Description: Product Drawing
64 oz Industrial RD

Size: D
Scale: 1:1

Drawing Number: MA7225-2

REV D
SHEET 2 OF 7

REV.	DESCRIPTION	DATE	APPROVED
-	See Sheet1	-	-

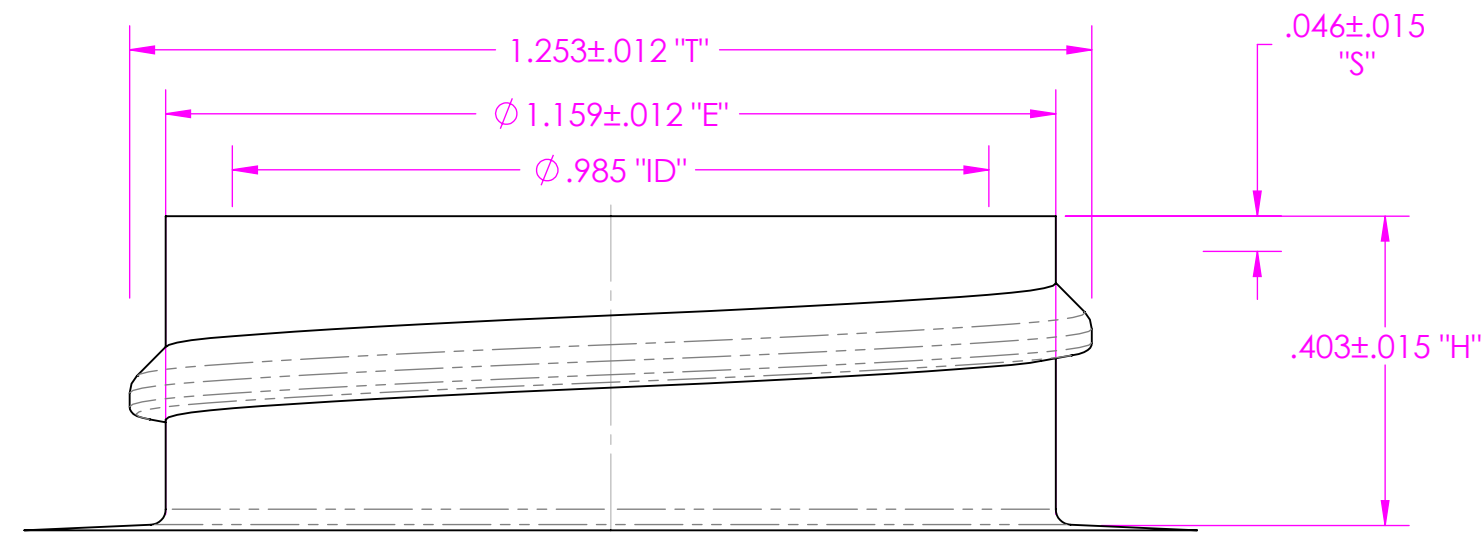


MA7225-2 38mm SP400			
ITEM	MINIMUM	TARGET	MAXIMUM
T	1.452	1.464	1.476
E	1.358	1.370	1.382
I		1.232	
S	.031	.046	.061
H	.388	.403	.418
SLANT			.020"
OVALITY			.050"



PROPRIETARY AND CONFIDENTIAL <small>THE INFORMATION CONTAINED IN THIS DRAWING IS THE SOLE PROPERTY OF MID-AMERICA MACHINING, INC. ANY REPRODUCTION IN PART OR AS A WHOLE WITHOUT THE WRITTEN PERMISSION OF MID-AMERICA MACHINING, INC. IS PROHIBITED.</small>	Drawn By: MTS	Date: 3/18/2106	Container Data:
	Checked:	Date:	Weight
	Customer:	Job# :	Fill Level Capacity ~
	Reference Materials:		Overflow Capacity ~
			Material ~
			Avg. Wall Thickness
			Description: Neck Drawing 38MM SP 400
			Size: C Scale: 2:1
			Drawing Number: MA7225-2
			REV D SHEET 3 OF 7

REV.	DESCRIPTION	DATE	APPROVED
-	See Sheet1	-	-

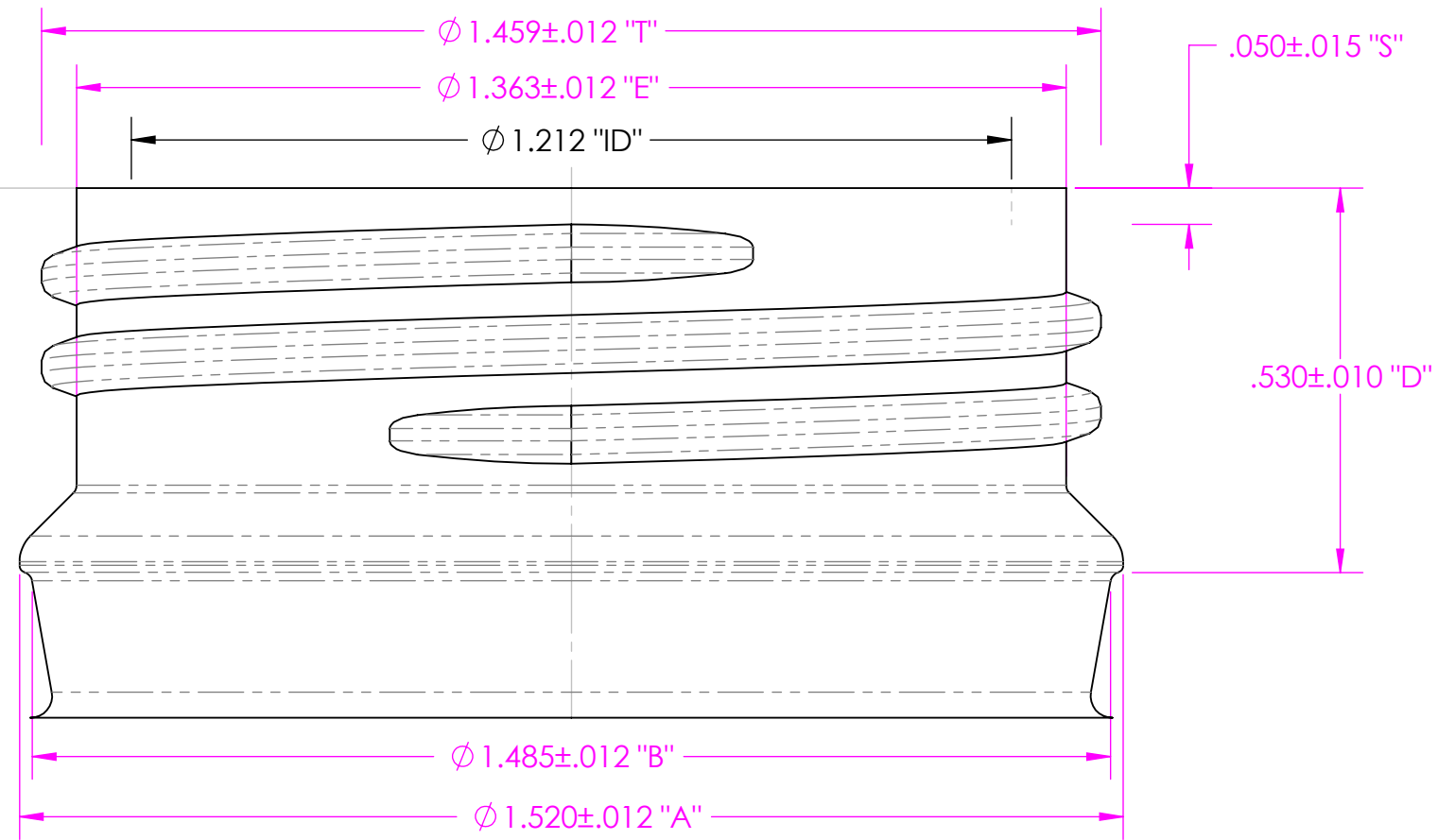


MA7225-2 33mm SP400			
ITEM	MINIMUM	TARGET	MAXIMUM
T	1.241	1.253	1.265
E	1.147	1.159	1.171
I		.985	
S	.031	.046	.061
H	.388	.403	.418
SLANT			.020"
OVALITY			.050"



PROPRIETARY AND CONFIDENTIAL <small>THE INFORMATION CONTAINED IN THIS DRAWING IS THE SOLE PROPERTY OF MID-AMERICA MACHINING, INC. ANY REPRODUCTION IN PART OR AS A WHOLE WITHOUT THE WRITTEN PERMISSION OF MID-AMERICA MACHINING, INC. IS PROHIBITED.</small>	Drawn By: MTS	Date: 3/18/2106	Container Data:
	Checked:	Date:	Weight
	Customer:	Job# :	Fill Level Capacity ~
	Reference Materials:		Overflow Capacity ~
		Material ~	
		Avg. Wall Thickness	
		Size: C	Description: Neck Drawing 33MM SP 400
		Scale: 2:1	Drawing Number: MA7225-2
			REV D
			SHEET 4 OF 7

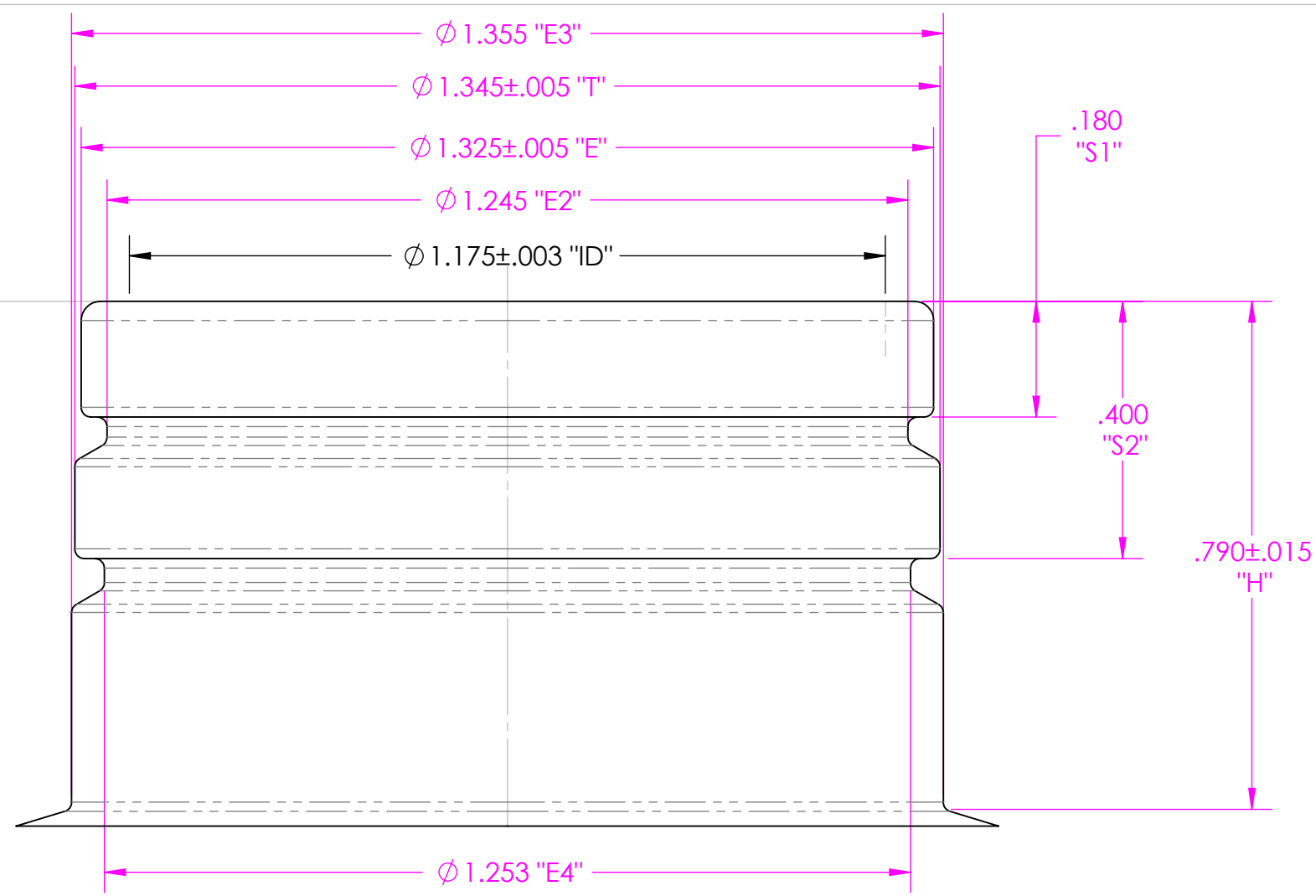
REV.	DESCRIPTION	DATE	APPROVED
-	See Sheet1	-	-



MA7225-2 38mm DROP-LOK			
ITEM	MINIMUM	TARGET	MAXIMUM
T	1.447	1.459	1.471
E	1.351	1.363	1.375
I		1.212	
S	.035	.050	.065
D	.520	.530	.540
SLANT			.020"
OVALITY			.050"



PROPRIETARY AND CONFIDENTIAL <small>THE INFORMATION CONTAINED IN THIS DRAWING IS THE SOLE PROPERTY OF MID-AMERICA MACHINING, INC. ANY REPRODUCTION IN PART OR AS A WHOLE WITHOUT THE WRITTEN PERMISSION OF MID-AMERICA MACHINING, INC. IS PROHIBITED.</small>	Drawn By: MTS	Date: 3/18/2106	Container Data:
	Checked:	Date:	Weight
	Customer:	Job# :	Fill Level Capacity
	Reference Materials:		Overflow Capacity
			Material ~
			Avg. Wall Thickness
			Description: Neck Drawing 38mm HOFFER DROP-LOK Size: C Scale: 2:1
			Drawing Number: MA7225-2
			REV D SHEET 5 OF 7



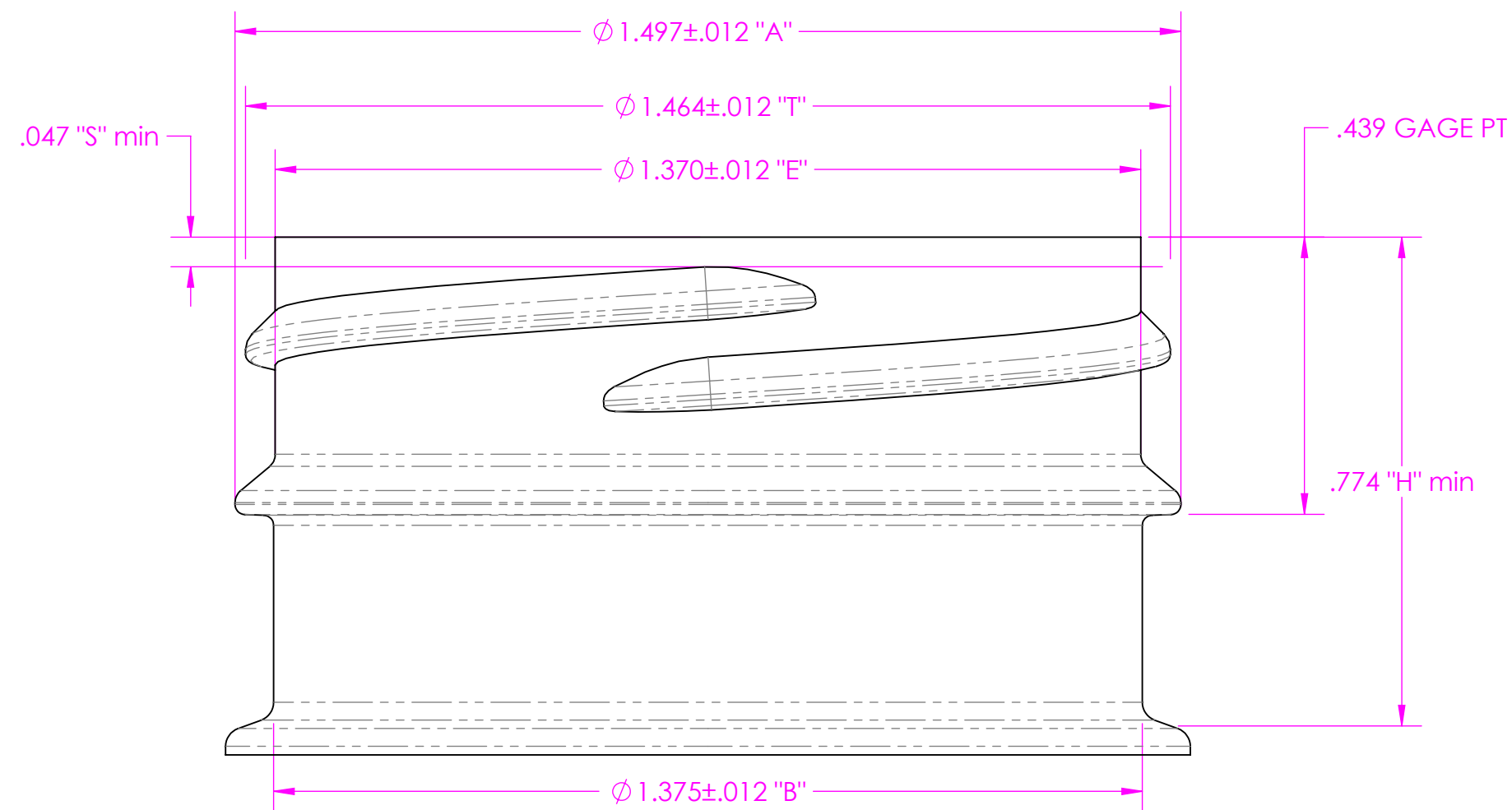
REV.	DESCRIPTION	DATE	APPROVED
-	See Sheet1	-	-

MA7225-2 38mm PORTOLA LT SNAP CAP

ITEM	MINIMUM	TARGET	MAXIMUM
E3		1.355	
T	1.340	1.345	1.350
E	1.320	1.325	1.330
E2		1.245	
I	1.172	1.175	1.178
S		.180	
H	.775	.790	.805
S2		.400	
E4		1.253	
SLANT			.020"
OVALITY			.050"



PROPRIETARY AND CONFIDENTIAL <small>THE INFORMATION CONTAINED IN THIS DRAWING IS THE SOLE PROPERTY OF MID-AMERICA MACHINING, INC. ANY REPRODUCTION IN PART OR AS A WHOLE WITHOUT THE WRITTEN PERMISSION OF MID-AMERICA MACHINING, INC. IS PROHIBITED.</small>	Drawn By: MTS	Date: 3/18/2106	Container Data:
	Checked:	Date:	Weight
	Customer:	Job# :	Fill Level Capacity ~
	Reference Materials:		Overflow Capacity ~
		Material ~	
		Avg. Wall Thickness	
Description: Neck Drawing 38mm Snap Cap		Size: C Scale: 2:1	Drawing Number: MA7225-2
		REV D	SHEET 6 OF 7



REV.	DESCRIPTION	DATE	APPROVED
-	See Sheet1	-	-

MA7225-2 38mm BERRY NECK			
ITEM	MINIMUM	TARGET	MAXIMUM
A	1.485	1.497	1.509
T	1.452	1.464	1.476
E	.359	1.370	.383
S	.047		
H	.774		
GAGE PT		.439	
SLANT			.020"
OVALITY			.050"



PROPRIETARY AND CONFIDENTIAL <small>THE INFORMATION CONTAINED IN THIS DRAWING IS THE SOLE PROPERTY OF MID-AMERICA MACHINING, INC. ANY REPRODUCTION IN PART OR AS A WHOLE WITHOUT THE WRITTEN PERMISSION OF MID-AMERICA MACHINING, INC. IS PROHIBITED.</small>	Drawn By: MTS	Date: 3/18/2106	Container Data:
	Checked:	Date:	Weight
	Customer:	Job# :	Fill Level Capacity ~
	Reference Materials:		Overflow Capacity ~
		Material ~	
		Avg. Wall Thickness	

Description: Neck Drawing 38mm SPECIAL 2 LEAD		REV D
Size: C	Drawing Number: MA7225-2	SHEET 7 OF 7
Scale: 2:1		