

Represented by



Product Specification Sheet

Illing Part#

3552WPP

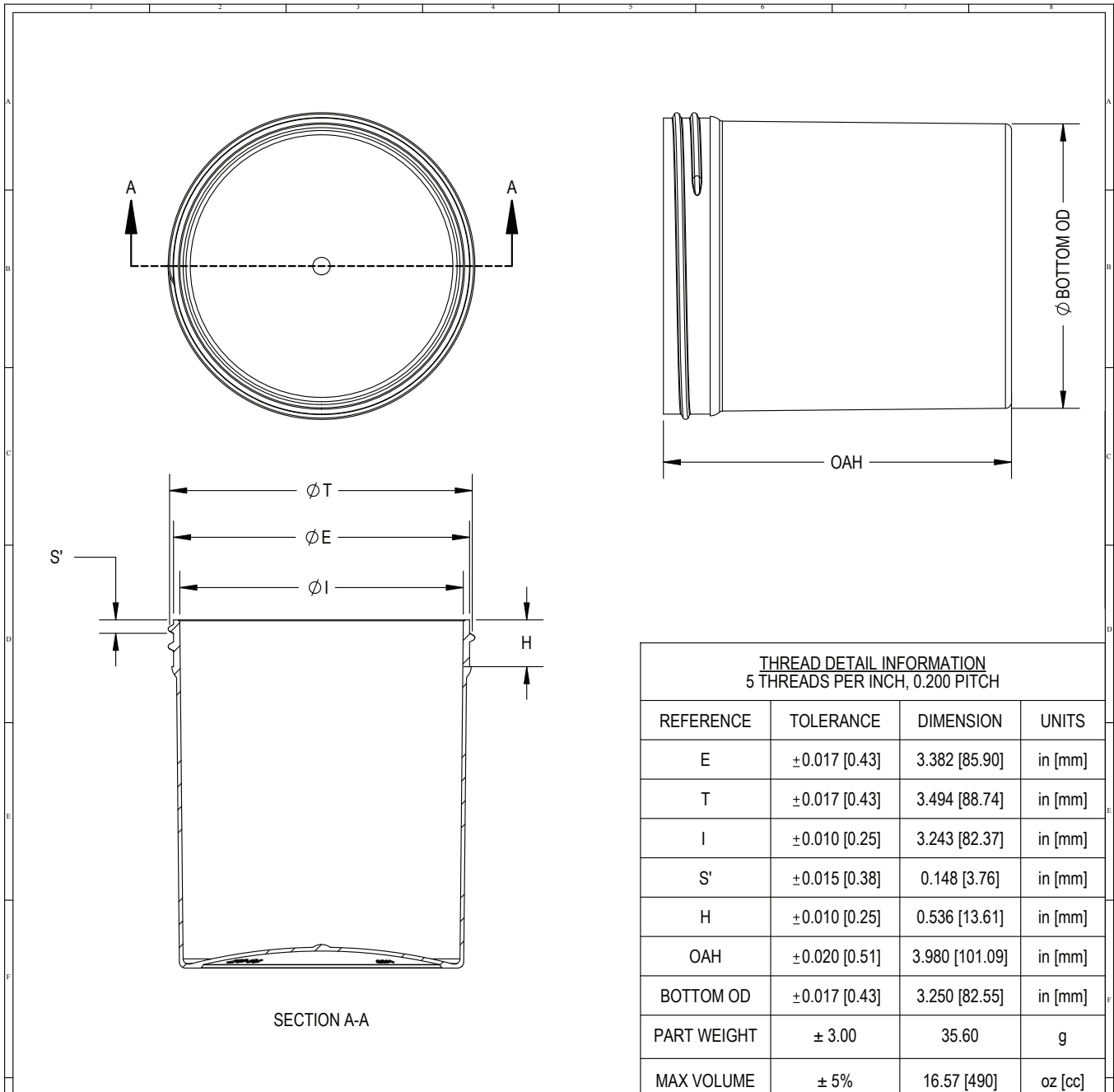
16 OZ 89-400 WHT PP SS REG WALL CT JAR

Part #: 3552WPP

Size:	16OZ
Color:	WHITE
Material:	PP
Style:	REGULAR WALL, ROUND
Additional Info:	89-400mm, CONTINUOUS THREAD
Case Pack:	96/EACH
Pallet Pack:	1,920/EACH



www.illingpackaging.com



THREAD DETAIL INFORMATION			
5 THREADS PER INCH, 0.200 PITCH			
REFERENCE	TOLERANCE	DIMENSION	UNITS
E	±0.017 [0.43]	3.382 [85.90]	in [mm]
T	±0.017 [0.43]	3.494 [88.74]	in [mm]
I	±0.010 [0.25]	3.243 [82.37]	in [mm]
S'	±0.015 [0.38]	0.148 [3.76]	in [mm]
H	±0.010 [0.25]	0.536 [13.61]	in [mm]
OAH	±0.020 [0.51]	3.980 [101.09]	in [mm]
BOTTOM OD	±0.017 [0.43]	3.250 [82.55]	in [mm]
PART WEIGHT	± 3.00	35.60	g
MAX VOLUME	± 5%	16.57 [490]	oz [cc]


STATIC TORQUE RECOMMENDATION
40-70 in-lbs
 THIS REQUIREMENT MAY VARY DEPENDING UPON BOTTLE MATERIAL, NECK FINISH, AND CAPPING EQUIPMENT

THE CLOSURE DIMENSIONS DEPICTED ARE THOSE WHICH HAVE GENERALLY BEEN FOUND TO BE FUNCTIONAL BASED ON INDUSTRY EXPERIENCE BECAUSE OF VARIABILITY IN GLASS AND PLASTIC CONTAINER FINISHES. EACH CLOSURE/FINISH SYSTEM SHOULD BE INDIVIDUALLY EVALUATED AND TESTED TO ENSURE IT MEETS APPLICABLE PERFORMANCE CRITERIA. SEE QUALITY ASSURANCE SPECIFICATIONS FOR ADDITIONAL INFORMATION.


MOLD-RITE, WEATHERCHEM AND STULL TECHNOLOGIES RESERVES THE RIGHT TO REVISE ANY OR ALL SPECIFICATIONS AND REQUIREMENTS.

DRAWING TYPE : CUSTOMER

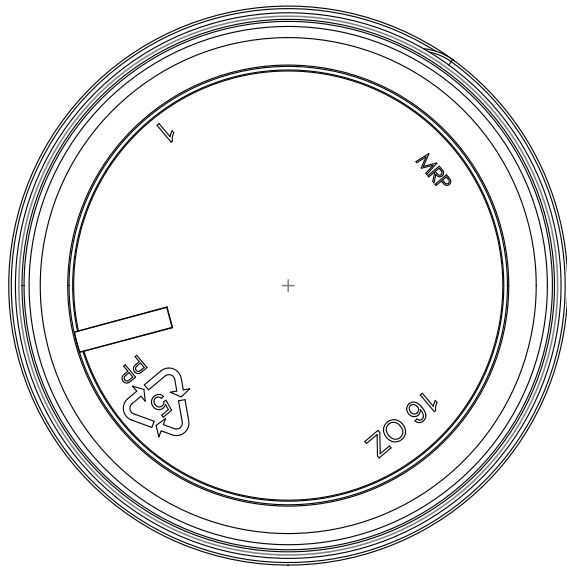
REPLACES DRAWINGS: LJ 1026		DIMENSIONS ENCLOSED IN () INDICATE REFERENCE DIMENSIONS AND NO TOLERANCE LIMITS ARE ESTABLISHED	
TOLERANCES UNLESS OTHERWISE SPECIFIED			
DIMENSION (inches)	TOLERANCE	DIMENSION (mm)	TOLERANCE
0-0.787	±0.006	0-20	±0.152
0.788-1.181	±0.008	21-30	±0.203
1.182-2.756	±0.012	31-70	±0.305
2.757-3.937	±0.016	71-100	±0.406
3.938-5.096	±0.020	101-150	±0.508
5.097-7.874	±0.024	151-200	±0.610
7.875-9.843	±0.032	201-250	±0.813
ANGULAR TOLERANCE ± 2°			
PROPRIETARY AND CONFIDENTIAL			
THIS DRAWING IS PROTECTED BY COPYRIGHT AND CONTAINS INFORMATION PROPRIETARY TO MOLD-RITE, WEATHERCHEM AND STULL TECHNOLOGIES. ANY REPRODUCTION, DISCLOSURE, OR USE OF ITS CONTENTS OR ANY PART THEREOF IS EXPRESSLY PROHIBITED EXCEPT AS MOLD-RITE, WEATHERCHEM AND STULL TECHNOLOGIES OTHERWISE MAY AGREE IN WRITING			



Innovative • Reliable • Responsive

THIRD ANGLE PROJECTION	DISTRIBUTION CODE	DRAWING NAME
	D	16oz 89mm L Regular Wall Jar Continuous Thread
		DRAWING NUMBER
		CQA - 10384
DRAWN BY.	JDM 8/29/2017	MATERIAL
		POLYPROPYLENE
ENG APPR.	JDM 11/1/2017	MODEL NUMBER:
		PM 10383 16oz 89mm L Regular Wall Jar
QA APPR.	REL 11/02/2017	SCALE
		2:3
		SHEET SIZE
		8.5in*11in
		SHEET
		1 of 2
		REV NP
		00.AA

DATE	REV	N/P	DESCRIPTION	ENG	DRWN
11/8/2017	00	AA	UPDATE DRAWING FORMAT AND ASSIGNED NEW DRAWING NUMBER. TOLERANCES UPDATED PER CCMA STANDARDS AND TO ACCOMMODATE DUPLICATE MOLD.	JDM	JDM



THE CLOSURE DIMENSIONS DEPICTED ARE THOSE WHICH HAVE GENERALLY BEEN FOUND TO BE FUNCTIONAL BASED ON INDUSTRY EXPERIENCE BECAUSE OF VARIABILITY IN GLASS AND PLASTIC CONTAINER FINISHES. EACH CLOSURE/FINISH SYSTEM SHOULD BE INDIVIDUALLY EVALUATED AND TESTED TO ENSURE IT MEETS APPLICABLE PERFORMANCE CRITERIA. SEE QUALITY ASSURANCE SPECIFICATIONS FOR ADDITIONAL INFORMATION.

MOLD-RITE, WEATHERCHEM AND STULL TECHNOLOGIES RESERVES THE RIGHT TO REVISE ANY OR ALL SPECIFICATIONS AND REQUIREMENTS.

DRAWING TYPE : CUSTOMER

REFERENCES:
8901205

DIMENSIONS ENCLOSED IN () INDICATE REFERENCE DIMENSIONS AND NO TOLERANCE LIMITS ARE ESTABLISHED

TOLERANCES UNLESS OTHERWISE SPECIFIED			
DIMENSION (inches)	TOLERANCE	DIMENSION (mm)	TOLERANCE
0-0.787	±0.006	0-20	±0.152
0.788-1.181	±0.008	21-30	±0.203
1.182-2.756	±0.012	31-70	±0.305
2.757-3.937	±0.016	71-100	±0.406
3.938-5.096	±0.020	101-150	±0.508
5.097-7.874	±0.024	151-200	±0.610
7.875-9.843	±0.032	201-250	±0.813

ANGULAR TOLERANCE ± 2°
PROPRIETARY AND CONFIDENTIAL

THIS DRAWING IS PROTECTED BY COPYRIGHT AND CONTAINS INFORMATION PROPRIETARY TO MOLD-RITE, WEATHERCHEM AND STULL TECHNOLOGIES. ANY REPRODUCTION, DISCLOSURE, OR USE OF ITS CONTENTS OR ANY PART THEREOF IS EXPRESSLY PROHIBITED EXCEPT AS MOLD-RITE, WEATHERCHEM AND STULL TECHNOLOGIES OTHERWISE MAY AGREE IN WRITING



DISTRIBUTION CODE
D

DRAWING NAME
**16oz 89mm L Regular Wall Jar
Continuous Thread**

DRAWING NUMBER
CQA - 10384

DRAWN BY: JDM 8/29/2017

MATERIAL
POLYPROPYLENE

ENG APPR: JDM 11/1/2017

MODEL NUMBER:
PM 10383 16oz 89mm L Regular Wall Jar

QA APPR: REL 11/02/2017

SCALE	SHEET SIZE	SHEET	REV.NP
1:1	8.5 X 11	2 of 2	00.AA