

Represented by



ILLING[®]
Company, Inc.
Packaging Your Vision

Product Specification Sheet

Illing Part#

3506CKS

32 OZ CLEAR PET CYLINDER 28-410

Part #: 3506CKS

Size:	28-410
Color:	Clear
Material:	PET
Style:	Cylinder
Additional Info:	
Case Pack:	98 each
Pallet Pack:	1,960 each

ENVISION
DESIGN DECORATE DELIVER

LabelILLING[™]

AI SMART
PACKAGING

ILLING
GLOBAL
SOURCING

www.illingcompany.com

Represented by

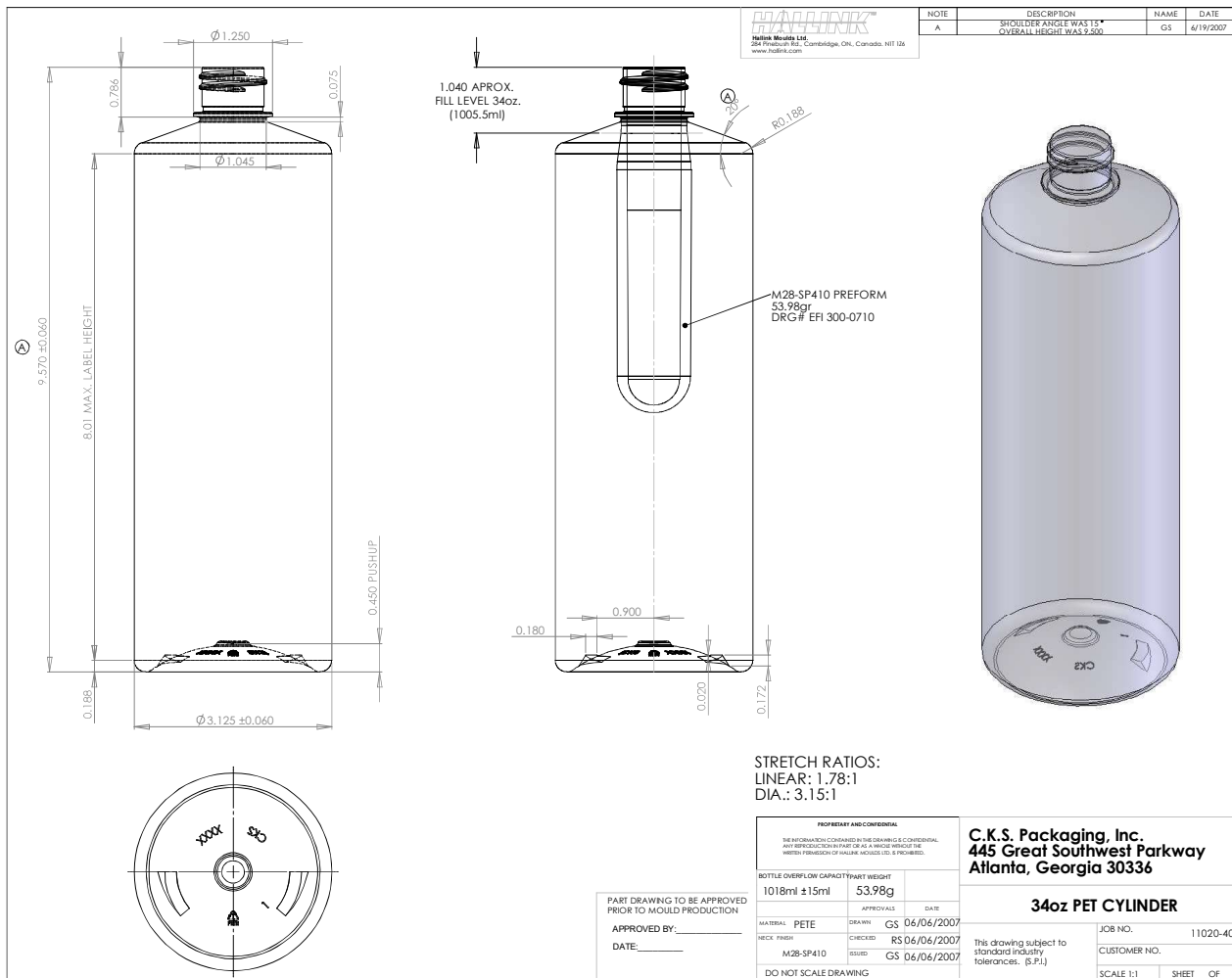


ILLING[®]
Company, Inc.
Packaging Your Vision

Product Specification Sheet

Illing Part#

3506CKS



Represented by



Product Specification Sheet

3506CKS

BOTTLE SPECIFICATIONS SHEET				32 oz PET Cylinder Clear			
				PRODUCT # : 603405515004			
NECK FINISH:	28-410	WEIGHT:	55.02 gm +/- 1 gm	COLOR:	Clear		
SPECIFICATIONS							
PREFORM NECK FINISH:	28-410			BOTTLE DIMENSIONS			
	LOWER TOLERANCE	SPEC.	UPPER TOLERANCE		LOWER TOLERANCE	SPEC.	UPPER TOLERANCE
" T " DIM.	1.066	1.078	1.090	OA HEIGHT	9.510	9.570	9.630
" E " DIM.	0.972	0.984	0.996	BASE DIAMETER	3.065	3.125	3.185
" S " DIM.	0.031	0.046	0.061	MAX LABEL HIGHT		8.010	
" H " DIM.	0.063	0.075	0.087	PUSH UP		0.450	
" I " DIM.	0.848	0.858	0.868	OVERFLOW ML	1003	1018	1033
				OVERFLOW OZ		34.4	
				WALL THICKNESS		10	
				TOPLOAD	45		80
SPECIAL INSTRUCTIONS : INSTRUCCIONES ESPECIALES: Wall distribution, top load must be checked on line by quality inspector on hourly line checks, by inspector packer and by operator every hour. Rotate bottle in hand checking for weak or hard spots on the label panel area. Measure bottle with wall thickness gauge if any area of concern is found during check. Check for under blown shoulders. Stack (2x2x5) 20 to a unit and wrap. Distribucion del material, presion debera ser chequeado en la linea por calidad en cada hora de chequeo, por la empacadora y por el operador cada hora. Dar vuelta el bote con la mano chequeando por lugares suaves o duros en el area de la etiqueta. Medir el bote con el gauge de medir el grosor del bote si se encuentra algun bote que este en duda. Chequear por cuellos undidos. Acomodar(2x2x5)a la unidad y enrollarla,							