

Represented by



Product Specification Sheet

Illing Part#

3502

32 OZ NATURAL HDPE CYLINDER BOTTLE 28-410 NECK

Part #: 3502

Size:	32 Ounce
Color:	Natural
Material:	HDPE
Style:	Plastic Cylinder Bottle
Additional Info:	Lectro Treat
Case Pack:	92
Pallet Pack:	1,840

Represented by

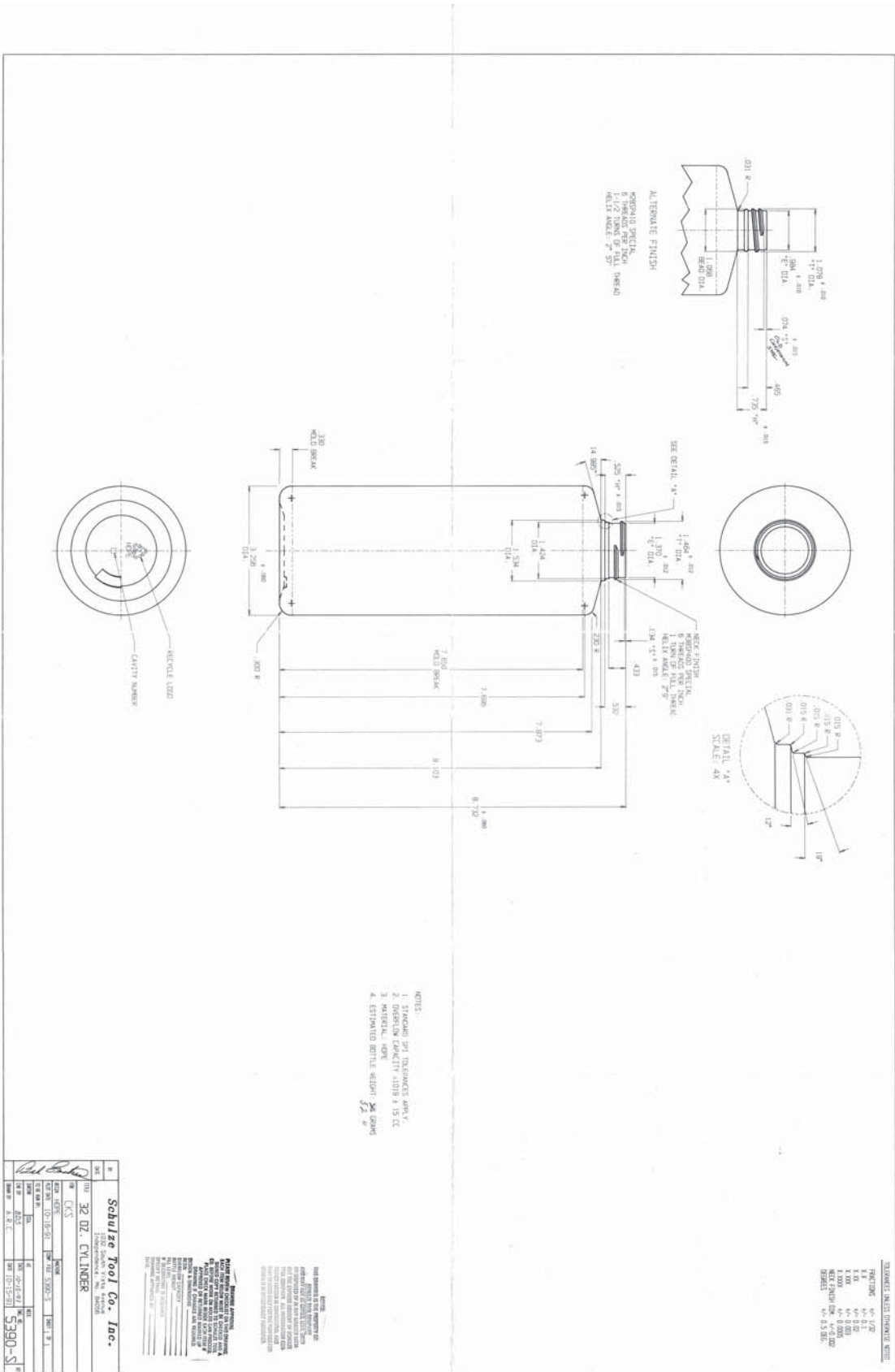


ILLING[™]
P A C K A G I N G

Product Specification Sheet

Illing Part#

3502



- NOTES:
1. STAMPING SET TOLERANCES APPLY.
 2. INSPECTION CAPACITY 4.0/3.8 1.15 CC
 3. MATERIAL: HDPE
 4. ESTIMATED DRITILE WEIGHT: 36.62 GMS

Part No.	32 OZ. CVLINDER
Part Desc.	32 OZ. CVLINDER
Part Mfg.	SCHULZE TOOL CO. INC.
Part Date	12-15-20
Part Rev.	1.0
Part Status	REV. 1.0
Part Qty	100
Part Price	0.390
Part Total	39.00

ILLING PACKAGING
10010 Independence Ave., Suite 100
Olathe, MO 64150
Tel: 816.506.4500
Fax: 816.506.4501
www.illingpackaging.com

THIS DRAWING IS THE PROPERTY OF
ILLING PACKAGING. IT IS TO BE USED
ONLY FOR THE MANUFACTURE OF
ILLING PACKAGING PRODUCTS. IT IS
NOT TO BE REPRODUCED OR
TRANSMITTED IN ANY FORM OR BY
ANY MEANS, ELECTRONIC OR
MECHANICAL, INCLUDING
PHOTOCOPYING, RECORDING, OR
BY ANY INFORMATION STORAGE
AND RETRIEVAL SYSTEM, WITHOUT
THE WRITTEN PERMISSION OF
ILLING PACKAGING.

DRAWING INCHES DIMENSIONS

FRACTIONS	1/8" - 1/2"
1	1/4"
2	3/8"
3	1/2"
4	5/8"
5	3/4"
6	7/8"
7	1"
8	1 1/8"
9	1 1/4"
10	1 1/2"
11	1 3/4"
12	1 7/8"
13	2"
14	2 1/8"
15	2 1/4"
16	2 3/8"
17	2 1/2"
18	2 5/8"
19	2 3/4"
20	2 7/8"
21	3"
22	3 1/8"
23	3 1/4"
24	3 3/8"
25	3 1/2"
26	3 5/8"
27	3 3/4"
28	3 7/8"
29	4"
30	4 1/8"
31	4 1/4"
32	4 3/8"
33	4 1/2"
34	4 5/8"
35	4 3/4"
36	4 7/8"
37	5"
38	5 1/8"
39	5 1/4"
40	5 3/8"
41	5 1/2"
42	5 5/8"
43	5 3/4"
44	5 7/8"
45	6"
46	6 1/8"
47	6 1/4"
48	6 3/8"
49	6 1/2"
50	6 5/8"
51	6 3/4"
52	6 7/8"
53	7"
54	7 1/8"
55	7 1/4"
56	7 3/8"
57	7 1/2"
58	7 5/8"
59	7 3/4"
60	7 7/8"
61	8"
62	8 1/8"
63	8 1/4"
64	8 3/8"
65	8 1/2"
66	8 5/8"
67	8 3/4"
68	8 7/8"
69	9"
70	9 1/8"
71	9 1/4"
72	9 3/8"
73	9 1/2"
74	9 5/8"
75	9 3/4"
76	9 7/8"
77	10"
78	10 1/8"
79	10 1/4"
80	10 3/8"
81	10 1/2"
82	10 5/8"
83	10 3/4"
84	10 7/8"
85	11"
86	11 1/8"
87	11 1/4"
88	11 3/8"
89	11 1/2"
90	11 5/8"
91	11 3/4"
92	11 7/8"
93	12"
94	12 1/8"
95	12 1/4"
96	12 3/8"
97	12 1/2"
98	12 5/8"
99	12 3/4"
100	12 7/8"



BOTTLE SPECIFICATIONS SHEET

LINE # _____

DATE: _____

CUSTOMER:				PRODUCT #: 650105500006			
PACK:							
BOTTLE 32 OZ ATM CYLINDER			BOX:	C001023	BULK BOX		
NECK FINISH:	28-410						
WEIGHT:	53	55	57	STAGGER	PACK ROWS	OF BOTTLES	
COLOR:	NATURAL			7 - 6 - 7 - 6 - 7 - 6 - 7			
MATERIAL:	HDPE			STACK BOXES 4 PER LAYER X 5 HIGH - FULL WRAP			
LECTRO TREAT	YES			COUNT:	92-1		
				NECK:	UP		
NECK FINISH:				BOTTLE DIMENSIONS			
	MIN.	SPEC.	MAX.		MIN.	SPEC.	MAX.
" H " DIM.	0.730	0.745	0.760	OA HEIGHT	8.778	8.838	8.898
" S " DIM.	0.059	0.074	0.089	DIAMETER	3.196	3.256	3.316
" T " DIM.	1.068		1.088				
				LABEL HEIGHT	APPROX	7.320	
" E " DIM.	0.974		0.994				
				WALL THICK	0.025	0.028	
				CAPACITY		32 OZ	
				SHOULDER THICK	0.050"		
				TOP LOAD	15 LB EMPTY	18.000	

SPECIAL INSTRUCTIONS:

GOOD WALL DISTRIBUTION - NO WATERMARKS
 TOP LOAD TEST REQUIRED TWICE PER SHIFT - 40 LB FILLED -
 15 - 18 lb. EMPTY