

Represented by



Product Specification Sheet

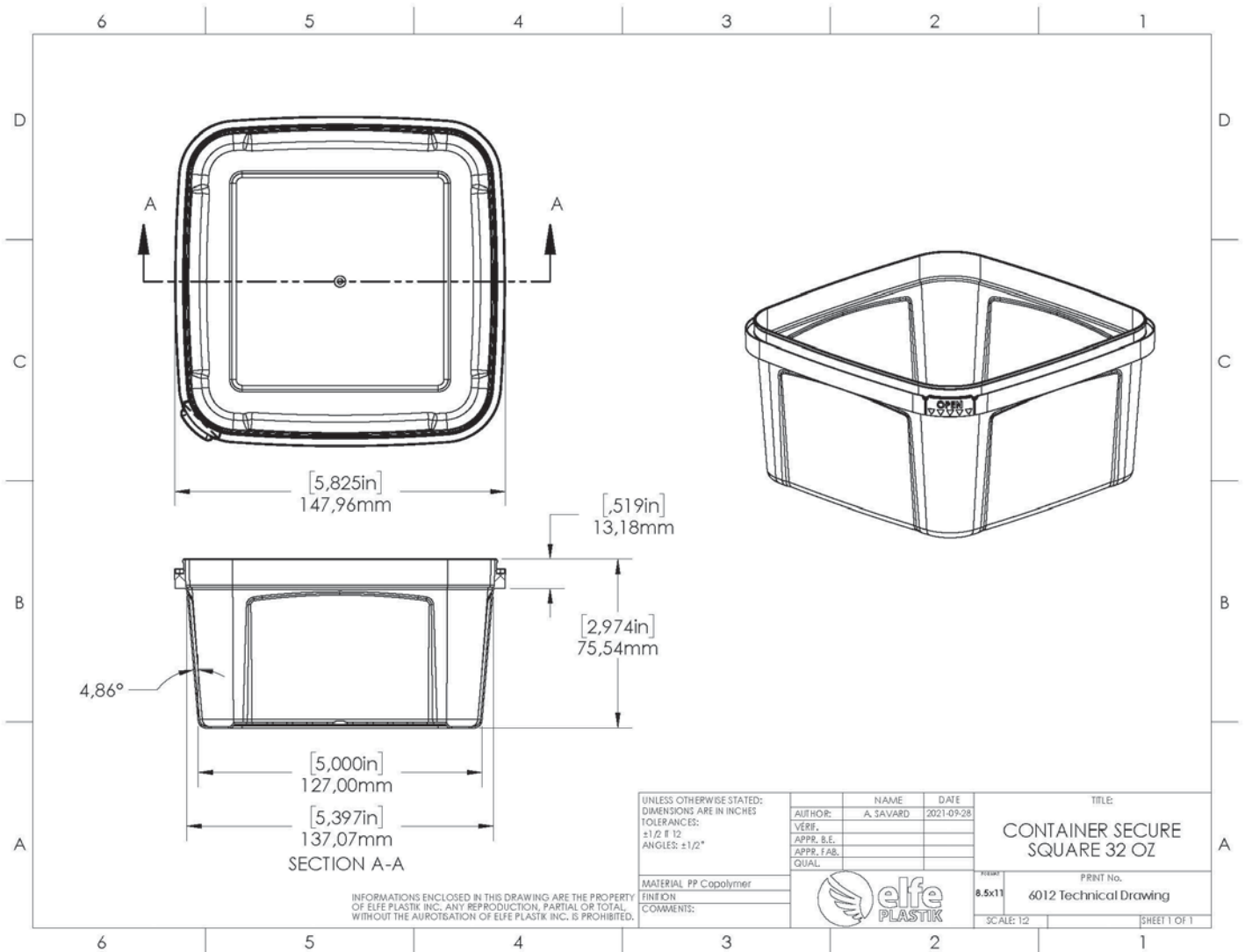
Illing Part#

33E6012

32 OZ (1 L) CLEAR PP SQUARE TE CONTAINER

Part #: 33E6012

Size:	32 Ounce
Color:	Clear
Material:	PP
Style:	Square
Additional Info:	Freezer Grade
Case Pack:	250
Pallet Pack:	7,000



INFORMATIONS ENCLOSED IN THIS DRAWING ARE THE PROPERTY OF ELFE PLASTIK INC. ANY REPRODUCTION, PARTIAL OR TOTAL, WITHOUT THE AUTHORIZATION OF ELFE PLASTIK INC. IS PROHIBITED.



TECHNICAL SPEC. SHEET

Printed on: December 23 2021

6005.00.01

Container Secure Square natural 32 oz freezer grade

Typical application

- Take out item
- Soup
- Sauce
- Fruit salad
- Prepared salads
- Nutritional supplements
- Confectionary
- Spreads

Features & Benefits

- Easy to open and use
- Liquid tight
- High definition photo quality IML decoration

Use

- To open : Insert your finger in the break-tab on the container
- To close : Press on the center of the lid to evacuate the air and close the snap

Material

Clear Polypropylene (BPA Free)

Technical Specifications

Product Code	Capacity under lid [mL]	Wall Thickness [in]	Approx Weight [g]	Overall Height		Overall Diameter	
				[in]	[mm]	[in]	[mm]
6005.00.01	1152,1	0,022	36,07	3,00	76,20	5,85	148,59

Decoration IML

- In-Mold-Labeling (IML) : 4 color process (CMYK) and 4 additional PMS colors if required
- Container: Die line to be supplied
- Lid: Die line to be supplied

Ordering Information

Product	Code			Qty/ box	Box/ pallet	Weight/ box[kg]	Weight/ pallet [kg]	Dimension box [in]		
	Color	Material	IML					Length	Width	Height
6005	XXX	XX	XXX	250	28	9,0	252,49	23,75	17,625	11,25

Contact your representative or customer service for exact ordering code

Packaged in cardboard boxes with inner bag

Top loading resistance

2,0kg 4,4 lbs
at 73 F (23 C) for 30 days

Product temperature when filling containers and warehouse temperature will affect container performance. Elfe Plastik recommends performing necessary testing prior to full production.

Storing and distribution

No double pallet stacking. Shelving in a dry and tempered space is recommended.
For sale to manufacturers, distributors and end consumers. Storage period is 3 years.

Recommendations

- Handling conditions vary from customer to customer; therefore, we recommend to validate your processes (filling, conveying, warehousing, etc.) with specific product testing.
- For optimal stacking stability and top load resistance, we recommend releasing the air from the container when putting on the lid.
- All containers to be packed in cardboard box.
- Do not exceed pallets edges with containers.
- Stretch wrapping machine tension should be adjusted to container.
- Maximum filling temperature is at 212 F (100 C) Before closing temperature to be tested by the customer.
- Minimum temperature use is -25 °C.
- Can be used in microwave or washing machine.

Chemical compatibility

Some chemicals can affect the integrity of the container. Any product requiring a Material Safety data Sheet (MSDS) has to be submitted to Elfe Plastik. If the buyer fails to adhere to this clause the related product guarantees will be void.

Certifications

Raw materials used are tested according to ASTM standards for polymers, approved for food contact and meet FDA (Food and Drug Administration USA) and CFIA (Canadian Food Inspection Agency) regulations.